



SL1 Relay

Description

This small relay board receives control from a Master3-1 expansion port. The three wire interface to the Master3-1 is open, close and +12Vdc. There are two relays on the board one for open and one for close. They are wired so that they cannot both be active. This prevents the potential for damage to an AC motor when both winding are energized simultaneously. Two three wire control ports are provided to allow daisy chaining of the control signals. The two ports are tied in parallel with the direction switched between the two ports. This provides a simple way of reversing the motor direction rather than requiring the motor direction leads to swapped.

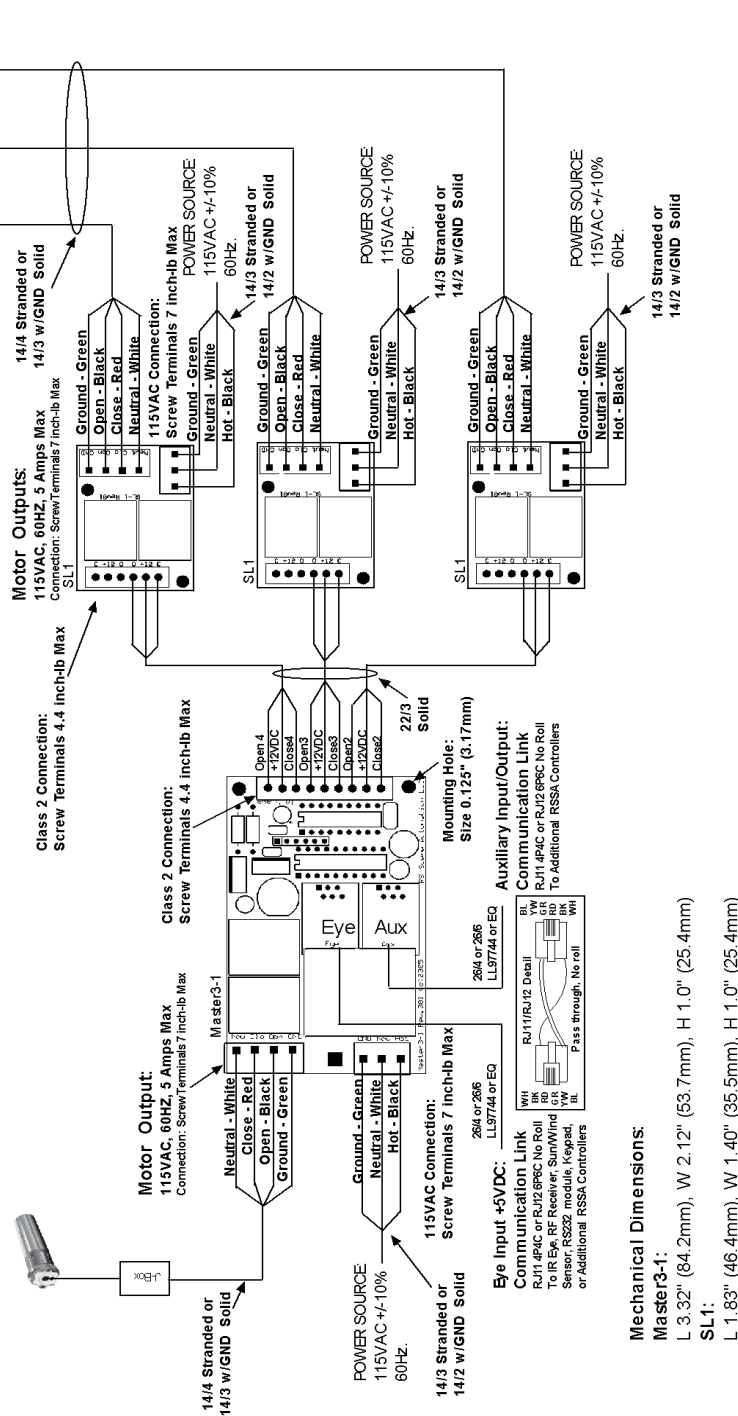
Specifications

Dimensions:	1.82 X 1.377 inches
Input Voltage:	115 VAC +/- 10% 60Hz.
Output Voltage:	115 VAC up to 5 Amps
Control port load:	12 VDC 35mA per port



Master3-1 and SL1 Motor Controllers

These controllers are intended for the control of motorized shades or projection screens. They have not been evaluated for the Standard for safety related controls UL991 and therefore are not considered suitable for entrapment protection. Reference Manual.



Note:

Typical four motor schematic for Master3-1 and SL1 series controllers. These boards are to be mounted in Listed enclosures using the standoffs provided. Two piece terminal connectors should be carefully removed, wired and then replaced one at a time. All line voltage shall be performed by a licensed electrician per local electrical code standards. All field wiring to be permanent. To avoid the possibility of electrical shock, turn off the power to the controller when servicing. For further information on these products reference the manual.

Mechanical Dimensions:

- Master3-1:
L 3.32" (84.2mm), W 2.12" (53.7mm), H 1.0" (25.4mm)
- SL1:
L 1.83" (46.4mm), W 1.40" (35.5mm), H 1.0" (25.4mm)