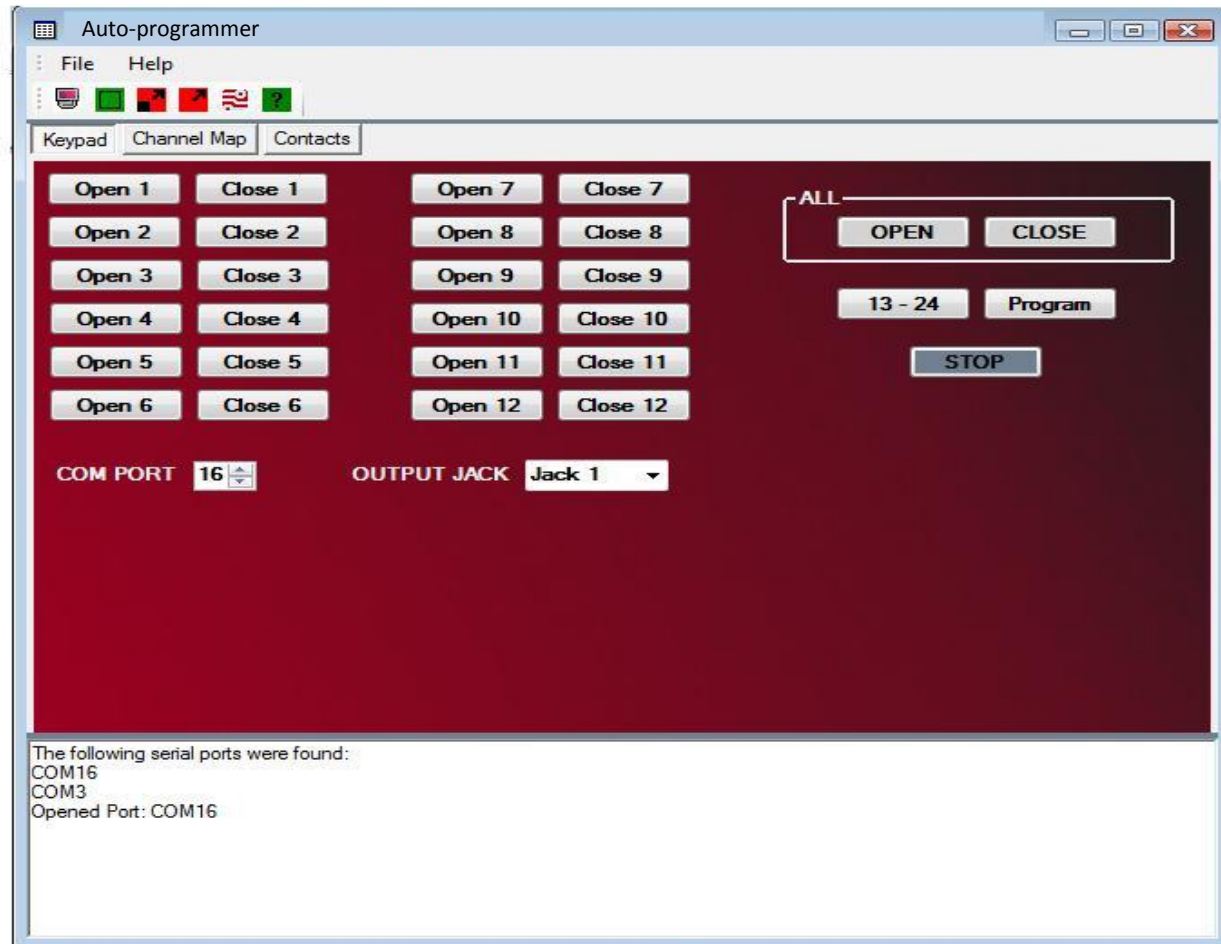


Auto-programmer for B232-8 Keypad Testing Interface



Auto-programmer for B232-8

Motor Channel Assignments

The screenshot shows the 'Auto-programmer' software window. The title bar reads 'Auto-programmer'. Below the title bar is a menu bar with 'File' and 'Help'. A toolbar contains several icons: a printer, a green square, a red square with a black cross, a red square with a white cross, a red square with a white question mark, and a green square with a white question mark. Below the toolbar are three tabs: 'Keypad', 'Channel Map', and 'Contacts'. The 'Channel Map' tab is active, displaying a table with the following structure:

Motor	Channel	Channel	Channel	Channel	Channel	Channel
1						
2						
3						
4						

The first row of the table is highlighted in blue. Below the table is a large grey rectangular area. At the bottom of the window, a status bar contains the following text:

The following serial ports were found:
COM16
COM3
Opened Port: COM16

Auto-programmer for B232-8

Switch Channel Assignments

